



**John  
BOOS**  
Since 1887

ITEM #: \_\_\_\_\_ QTY: \_\_\_\_\_

MODEL #: \_\_\_\_\_

PROJECT NAME: \_\_\_\_\_

073118

3601 S. Banker St. Effingham, IL 62401 • P.O. BOX 609 • Ph: (888) 431-2667 • Fax: (800) 433-2667

## **"SDT-I" SOILED ISLAND DISHTABLES PRO-BOWL**



### **FEATURES:**

- TYPE 300 STAINLESS STEEL WITH # 4 POLISH, SATIN FINISH
- 8" DEEP BOWLS (BOWL SIZE 20" X 20" X 8")
- BOTTOM OF BOWLS FORMED FOR DRAINAGE TO 3-1/2" DIAMETER DIE STAMPED OPENING
- FULL LENGTH **10" HIGH BOXED BACKSPLASH**, WITH 2" RETURN TO WALL AT 45 DEGREE AND 1/2" TURNED DOWN REAR LIP
- 1" FAUCET HOLES IN BACKSPLASH, 8" O/C
- ALL OUTSIDE CORNERS OF ASSEMBLY ARE BULLNOSED TO PROVIDE SAFE, CLEAN, AND POLISHED EDGE
- STANDARD 1-5/8" DIAMETER LEGS



### **CONSTRUCTION:**

- TOP: STAINLESS STEEL TOPS ARE TIG WELDED, EXPOSED WELDS ARE POLISHED TO MATCH ADJACENT SURFACE.

### **MATERIAL:**

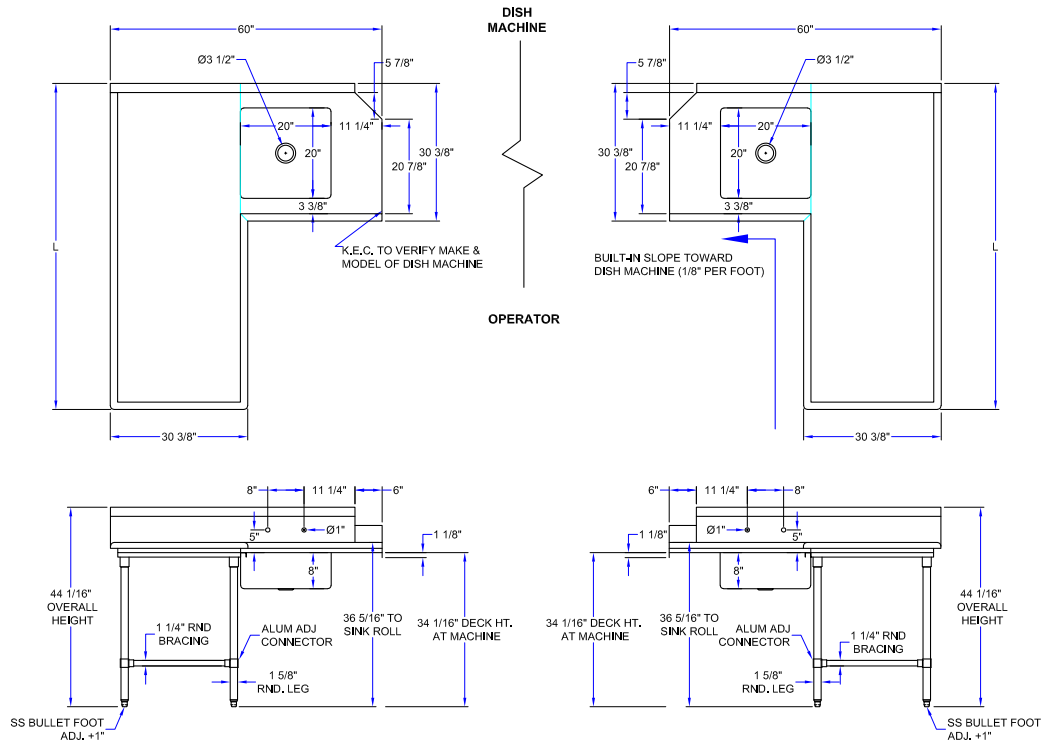
- TOP: STAINLESS STEEL
- FEET: 1" ADJUSTABLE STAINLESS STEEL BULLET FEET

<b>14 GAUGE 304 16 GA. STAINLESS STEEL LEGS</b>		<b>16 GAUGE 304 16 GA. STAINLESS STEEL LEGS</b>		<b>16 GAUGE GALVANIZED LEGS</b>	
PREMIUM	QTY	STANDARD	QTY	VALUE	QTY
SDT4-I6048SBK-L OR R		SDT6-I6048SBK-L OR R		SDT6-I6048GBK-L OR R	
SDT4-I6060SBK-L OR R		SDT6-I6060SBK-L OR R		SDT6-I6060GBK-L OR R	
SDT4-I6072SBK-L OR R		SDT6-I6072SBK-L OR R		SDT6-I6072GBK-L OR R	
SDT4-I6084SBK-L OR R		SDT6-I6084SBK-L OR R		SDT6-I6084GBK-L OR R	
SDT4-I6096SBK-L OR R		SDT6-I6096SBK-L OR R		SDT6-I6096GBK-L OR R	
SDT4-I60108SBK-L OR R		SDT6-I60108SBK-L OR R		SDT6-I60108GBK-L OR R	
SDT4-I60120SBK-L OR R		SDT6-I60120SBK-L OR R		SDT6-I60120GBK-L OR R	
SDT4-I60144SBK-L OR R		SDT6-I60144SBK-L OR R		SDT6-I60144GBK-L OR R	

### **OPTIONAL ACCESSORIES**

DESCRIPTION	MODEL #	QTY
FAUCETS		
OVER SHELF		
UNDER SHELF		

## DETAILED SPECIFICATIONS



- UNITS 7 FT. AND LARGER ARE FURNISHED WITH SIX LEGS.

LENGTH	14 GAUGE 304 16 GA. STAINLESS STEEL LEGS		16 GAUGE 304 16 GA. STAINLESS STEEL LEGS		16 GAUGE GALVANIZED LEGS	
	PREMIUM	WT. (LBS)	STANDARD	WT. (LBS)	VALUE	WT. (LBS)
48"	SDT4-I6048SBK-L OR R	200	SDT6-I6048SBK-L OR R	190	SDT6-I6048GBK-L OR R	190
60"	SDT4-I6060SBK-L OR R	220	SDT6-I6060SBK-L OR R	210	SDT6-I6060GBK-L OR R	210
72"	SDT4-I6072SBK-L OR R	240	SDT6-I6072SBK-L OR R	230	SDT6-I6072GBK-L OR R	230
84"	SDT4-I6084SBK-L OR R	255	SDT6-I6084SBK-L OR R	245	SDT6-I6084GBK-L OR R	245
96"	SDT4-I6096SBK-L OR R	275	SDT6-I6096SBK-L OR R	265	SDT6-I6096GBK-L OR R	265
108"	SDT4-I60108SBK-L OR R	295	SDT6-I60108SBK-L OR R	285	SDT6-I60108GBK-L OR R	285
120"	SDT4-I60120SBK-L OR R	310	SDT6-I60120SBK-L OR R	300	SDT6-I60120GBK-L OR R	300
144"	SDT4-I60144SBK-L OR R	350	SDT6-I60144SBK-L OR R	340	SDT6-I60144GBK-L OR R	340

## MODEL # STRUCTURE

60 = TOTAL WIDTH OF DISHTABLE

I = ISLAND DISHTABLE

6 = 16GA WORK SURFACE

SDT = SOILED DISHTABLE

120 = LENGTH

SB = STAINLESS LEGS & BRACING

K = K.D. W/ ADJUSTABLE BRACING

L OR R = LEFT OR RIGHT DISHTABLE

**SDT6-I60120SBK-L**

SOME UNITS SHIP UNASSEMBLED FOR REDUCED SHIPPING COST. ALL DIMENSIONS ARE TYPICAL. TOLERANCE +/- .500"

John Boos & Co. is constantly engaged in a program of improving products and therefore reserves the right to change specifications without prior notice.



Boos

AutoQuotes

3601 S. Banker St. • Effingham, IL 62401 • PO BOX 609 • quotes@johnboos.com

www.johnboos.com

073118

313