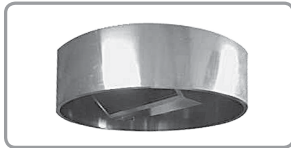




STAINLESS STEEL MOGOLIAN BBQ RANGE

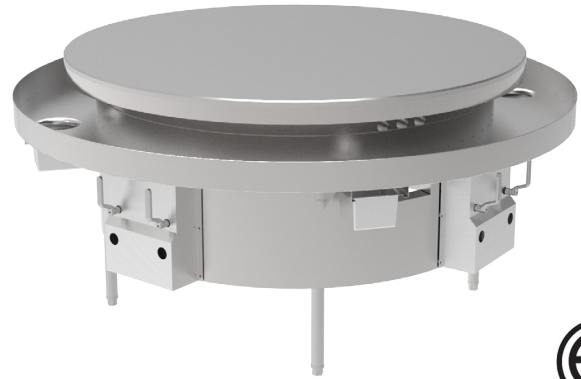
Features

- 3/4" thick stainless steel grill top plate
- Stainless steel scrap ring
- Adjustable stainless steel bullet feet
- Full size galvanized grease drip pan
- Double wall insulated body construction
- Built in safety control & manual gas shut off valves
- Standard pilot light system



Recommended Accessory:
MBG-HOOD

18 gauge 304 stainless steel
Removable grease filters & grease pans
14.7 psi static pressure

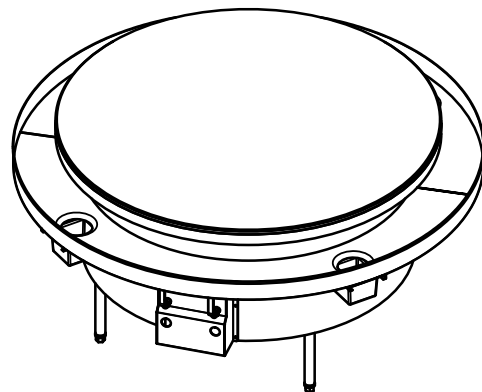
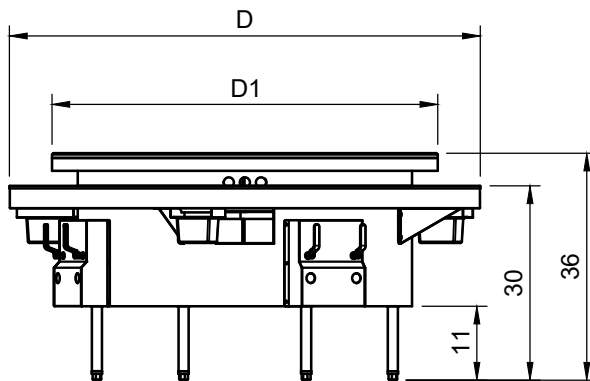


Description **Stainless Steel Mogolian BBQ Range**

Allow your patrons to customize their own delicious dishes with this mongolian barbeque range! Mongolian barbeque ranges are often paired with a buffet-style offering of noodles, meats, vegetables, sauces, and more that customers can use to create their own dish before handing it to the cook at the barbeque range.

1 year warranty for part and labor. warranty limit to replacement of equal or better unit.
Specifications subject to change without notice!

Plan View **ARE-MBG-60**



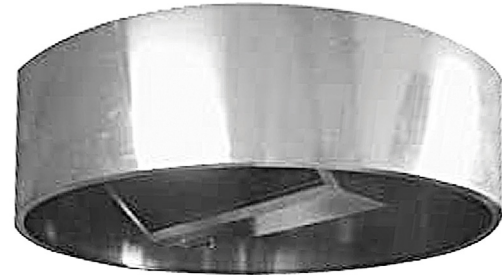
Order No.	D (in)	D1 (in)	Gas Inlet O.D (in)	Ring Burner	BTU/ hr	G.W. (lb)
ARE-MBG-36	49	36	1-1/4	1	400,000	450
ARE-MBG-48	61	48	1-1/4	2	587,000	750
ARE-MBG-60	73	60	1-1/4	3	785,000	1200



MOGOLIAN BBQ EXHAUST HOOD

Features

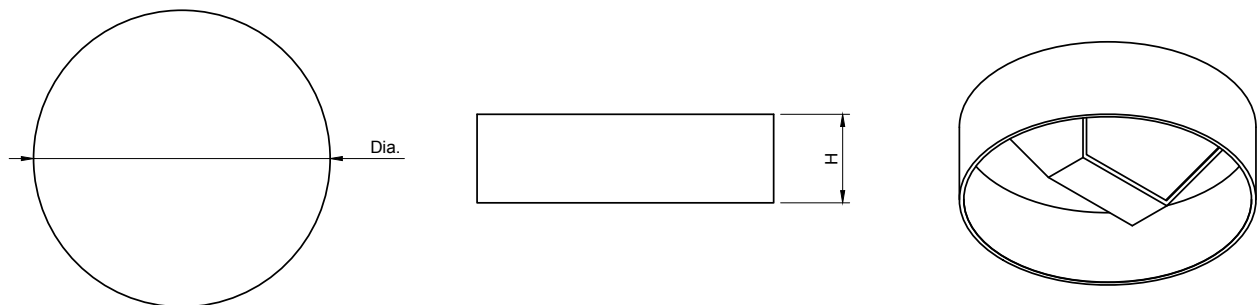
- Hoods are fabricated entirely of 18 gauge
- Type 304 stainless steel
- Static Pressure : 14.7 psi
- Removable grease filters and cup for easy access and cleaning



Description **Mongolian BBQ Exhaust Hood**

Mongolian B.B.Q. Hood is designed to capture and containment of cooking vapor specifically in oriental style applications. Built to the highest commercial standards approved and certified in accordance with ETL.

Plan View **MBG-67H**



Order No.	Diameter (in)	Height (in)	CFM	Recommended for Order of Grill
MBG-67H	67	20	1700	MBG-36 / MBG-42
MBG-73H	73	24 or 30	1910	MBG-42 / MBG-48
MBG-85H	85	24	2225	MBG-54 / MBG-60