



**John
BOOS**
Since 1887

ITEM #: _____ QTY: _____
MODEL #: _____
PROJECT NAME: _____

121917

3601 S. Banker St. Effingham, IL 62401 • P.O. BOX 609 • Ph: (888) 431-2667 • Fax: (800) 433-2667



"BTNS" MAPLE TOP WORK TABLES

1-3/4" THICK HARD ROCK MAPLE FLAT TOP WITH STAINLESS STEEL BASE AND 3 TIER DRAWER UNIT

FEATURES:

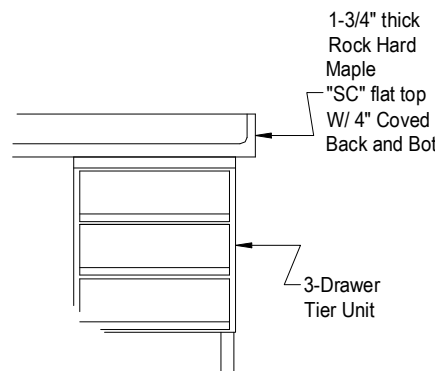
- 1-3/4" THICK HARD MAPLE TOP, STYLE "SC" WITH FLAT TOP
- MAPLE TOP IS FINISHED WITH PENETRATING OIL WITH OPTIONAL NATURAL CLEAR VARNIQUE FINISH
- 3 TIER DRAWER UNIT
- STAINLESS STEEL BASE AND BRACING TYPE 300 STAINLESS STEEL, WITH #4 POLISH, SATIN FINISH
- ADJUSTABLE BULLET FEET
- SHIPPED KNOCKED-DOWN, EASY-TO-ASSEMBLE
- NSF CERTIFIED

CONSTRUCTION:

- BASE: STAINLESS STEEL BASES ARE TIG WELDED
EXPOSED WELDS ARE POLISHED TO MATCH
ADJACENT SURFACES

MATERIAL:

- TOP: 1-3/4" THICK HARD ROCK MAPLE FINISHED WITH PENETRATING OIL
- DRAWER: PANELS - 22 GAUGE STAINLESS STEEL
- UNIT: FRONT DRAWER - 14 GAUGE REINFORCED WITH 1-1/2" SQUARE O.D. TUBING TYPE 300 STAINLESS STEEL WITH #4 POLISH, SATIN FINISH
- LEGS: 1-5/8" ROUND O.D., 16 GAUGE TYPE 300 TUBULAR STAINLESS STEEL WITH #4 POLISH, SATIN FINISH
- GUSSETS: STAINLESS STEEL
- FEET: 1" ADJUSTABLE STAINLESS STEEL BULLET FEET



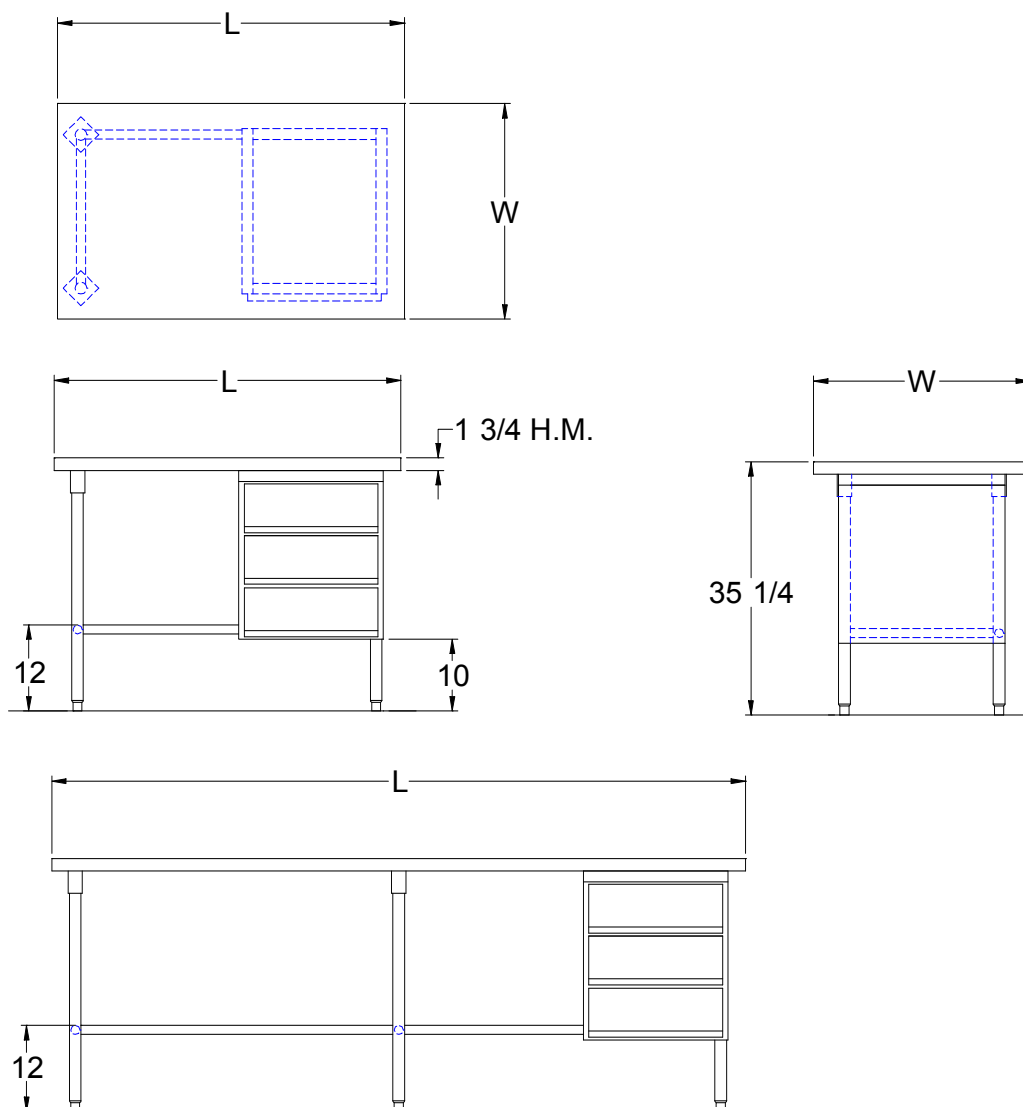
MAPLE TOP WORK TABLES

30" WIDE	QTY
BTNS01	
BTNS02	
BTNS03	
BTNS03A	
BTNS04	

OPTIONAL ACCESSORIES

DESCRIPTION	MODEL	QTY
DRAWER LOCK		
CASTERS		
OVERSHELVES		
POT RACK		

DETAILED SPECIFICATIONS



- UNITS 7 FT. AND LARGER ARE FURNISHED WITH SIX LEGS.

MAPLE TOP WORK TABLES

LENGTH	30" WIDE	WEIGHT (LBS)
48"	BTNS01	179
60"	BTNS02	199
72"	BTNS03	220
84"	BTNS03A	250
96"	BTNS04	270

SOME UNITS SHIP UNASSEMBLED FOR REDUCED SHIPPING COST. ALL DIMENSIONS ARE TYPICAL. TOLERANCE +/- .500"
 John Boos & Co. is constantly engaged in a program of improving products and therefore reserves the right to change specifications without prior notice.



Boos
lock

AQ AutoQuotes

3601 S. Banker St. • Effingham, IL 62401 • PO BOX 609 • quotes@johnboos.com

www.johnboos.com

011218

377