



**John
BOOS**
Since 1887

ITEM #: _____ QTY: _____

MODEL #: _____

PROJECT NAME: _____

073118

3601 S. Banker St. Effingham, IL 62401 • P.O. BOX 609 • Ph: (888) 431-2667 • Fax: (800) 433-2667

"SDT-K" SOILED CORNER DISHTABLES PRO-BOWL



FEATURES:

- TYPE 300 STAINLESS STEEL WITH # 4 POLISH, SATIN FINISH
- 8" DEEP BOWLS (BOWL SIZE 20" X 20" X 8")
- BOTTOM OF BOWLS FORMED FOR DRAINAGE TO 3-1/2" DIAMETER DIE STAMPED OPENING
- FULL LENGTH **10" HIGH BOXED BACKSPLASH**, WITH 2" RETURN TO WALL AT 45 DEGREE AND 1/2" TURNED DOWN REAR LIP
- 1" FAUCET HOLES IN BACKSPLASH, 8" O/C
- ALL OUTSIDE CORNERS OF ASSEMBLY ARE BULLNOSED TO PROVIDE SAFE, CLEAN, AND POLISHED EDGE
- STANDARD 1-5/8" DIAMETER LEGS



CONSTRUCTION:

- TOP: STAINLESS STEEL TOPS ARE TIG WELDED, EXPOSED WELDS ARE POLISHED TO MATCH ADJACENT SURFACE.

MATERIAL:

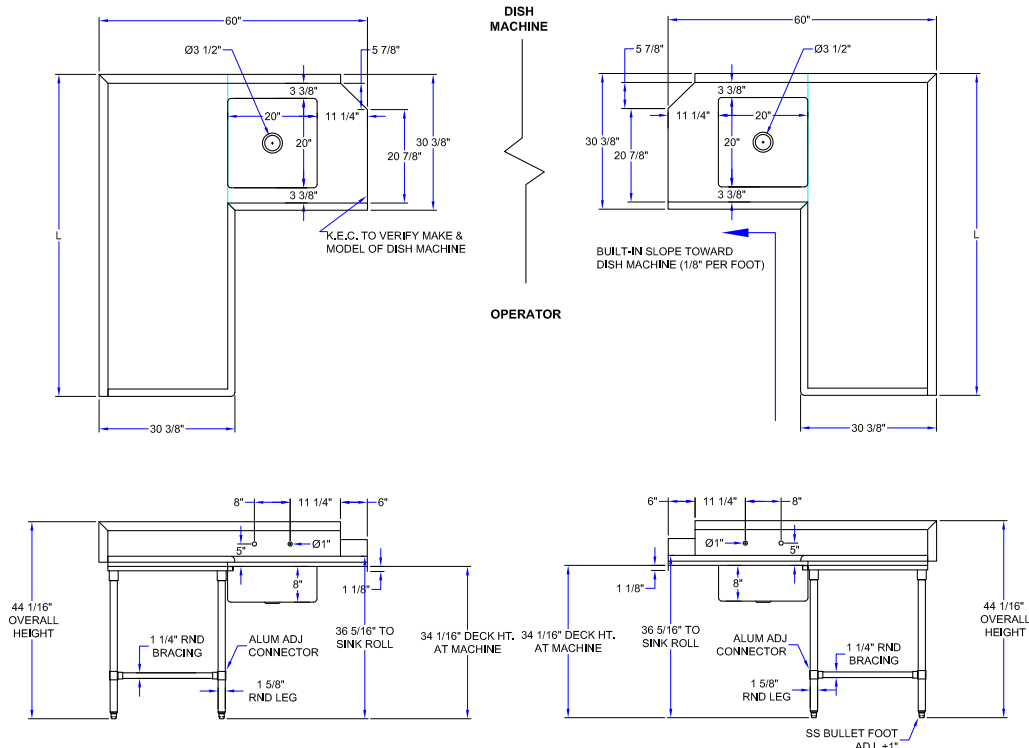
- TOP: STAINLESS STEEL
- FEET: 1" ADJUSTABLE STAINLESS STEEL BULLET FEET

14 GAUGE 304 16 GA. STAINLESS STEEL LEGS		16 GAUGE 304 16 GA. STAINLESS STEEL LEGS		16 GAUGE GALVANIZED LEGS	
PREMIUM	QTY	STANDARD	QTY	VALUE	QTY
SDT4-K6048SBK-L OR R		SDT6-K6048SBK-L OR R		SDT6-K6048GBK-L OR R	
SDT4-K6060SBK-L OR R		SDT6-K6060SBK-L OR R		SDT6-K6060GBK-L OR R	
SDT4-K6072SBK-L OR R		SDT6-K6072SBK-L OR R		SDT6-K6072GBK-L OR R	
SDT4-K6084SBK-L OR R		SDT6-K6084SBK-L OR R		SDT6-K6084GBK-L OR R	
SDT4-K6096SBK-L OR R		SDT6-K6096SBK-L OR R		SDT6-K6096GBK-L OR R	
SDT4-K60108SBK-L OR R		SDT6-K60108SBK-L OR R		SDT6-K60108GBK-L OR R	
SDT4-K60120SBK-L OR R		SDT6-K60120SBK-L OR R		SDT6-K60120GBK-L OR R	
SDT4-K60144SBK-L OR R		SDT6-K60144SBK-L OR R		SDT6-K60144GBK-L OR R	

OPTIONAL ACCESSORIES

DESCRIPTION	MODEL #	QTY
FAUCETS		
OVER SHELF		
UNDER SHELF		

DETAILED SPECIFICATIONS



- UNITS 7 FT. AND LARGER ARE FURNISHED WITH SIX LEGS.

LENGTH	14 GAUGE 304 16 GA. STAINLESS STEEL LEGS		16 GAUGE 304 16 GA. STAINLESS STEEL LEGS		16 GAUGE GALVANIZED LEGS	
	PREMIUM	WT. (LBS)	STANDARD	WT. (LBS)	VALUE	WT. (LBS)
48"	SDT4-K6048SBK-L OR R	205	SDT6-K6048SBK-L OR R	195	SDT6-K6048GBK-L OR R	195
60"	SDT4-K6060SBK-L OR R	225	SDT6-K6060SBK-L OR R	215	SDT6-K6060GBK-L OR R	215
72"	SDT4-K6072SBK-L OR R	245	SDT6-K6072SBK-L OR R	230	SDT6-K6072GBK-L OR R	230
84"	SDT4-K6084SBK-L OR R	255	SDT6-K6084SBK-L OR R	250	SDT6-K6084GBK-L OR R	250
96"	SDT4-K6096SBK-L OR R	285	SDT6-K6096SBK-L OR R	270	SDT6-K6096GBK-L OR R	270
108"	SDT4-K60108SBK-L OR R	305	SDT6-K60108SBK-L OR R	285	SDT6-K60108GBK-L OR R	285
120"	SDT4-I60120SBK-L OR R	325	SDT6-K60120SBK-L OR R	305	SDT6-K60120GBK-L OR R	305
144"	SDT4-I60144SBK-L OR R	365	SDT6-K60144SBK-L OR R	345	SDT6-K60144GBK-L OR R	345

MODEL # STRUCTURE

60 = TOTAL WIDTH OF DISHTABLE

K = CORNER DISHTABLE

6 = 16GA WORK SURFACE

SDT = SOILED DISHTABLE

120 = LENGTH

SB = STAINLESS LEGS & BRACING

K = K.D. W/ ADJUSTABLE BRACING

L OR R = LEFT OR RIGHT DISHTABLE

SDT6-K60120SBK-L

SOME UNITS SHIP UNASSEMBLED FOR REDUCED SHIPPING COST. ALL DIMENSIONS ARE TYPICAL. TOLERANCE +/- .500"

John Boos & Co. is constantly engaged in a program of improving products and therefore reserves the right to change specifications without prior notice.



Boos

AutoQuotes

3601 S. Banker St. • Effingham, IL 62401 • PO BOX 609 • quotes@johnboos.com

www.johnboos.com

073118

315